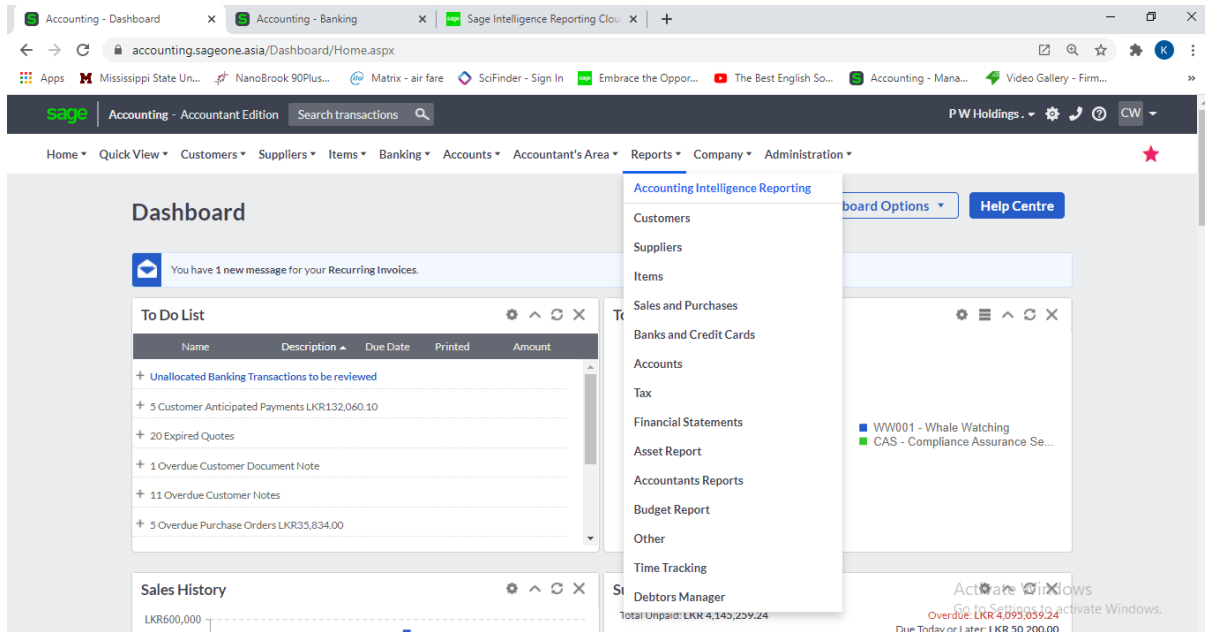


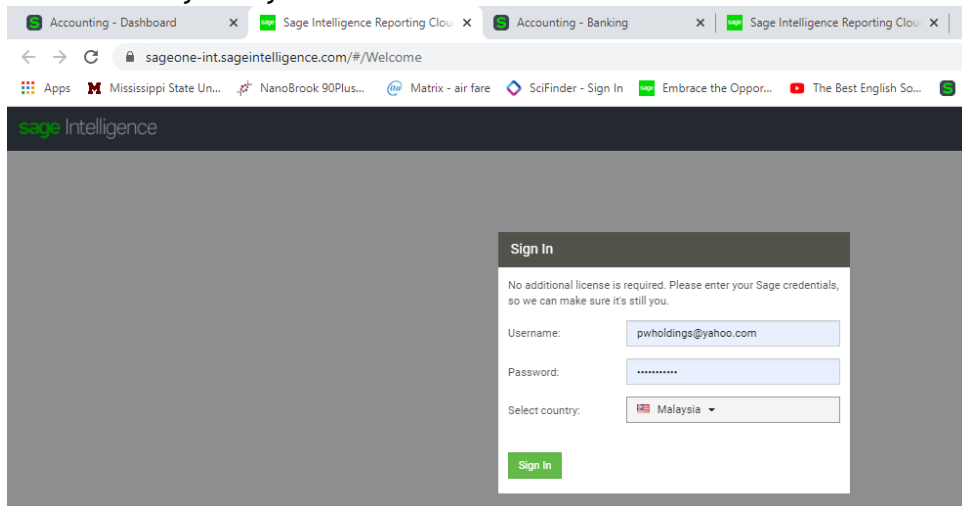
# **SAGE BUSINESS CLOUD ACCOUNTING**

## **ACCOUNTING INTELLIGENCE REPORTING**

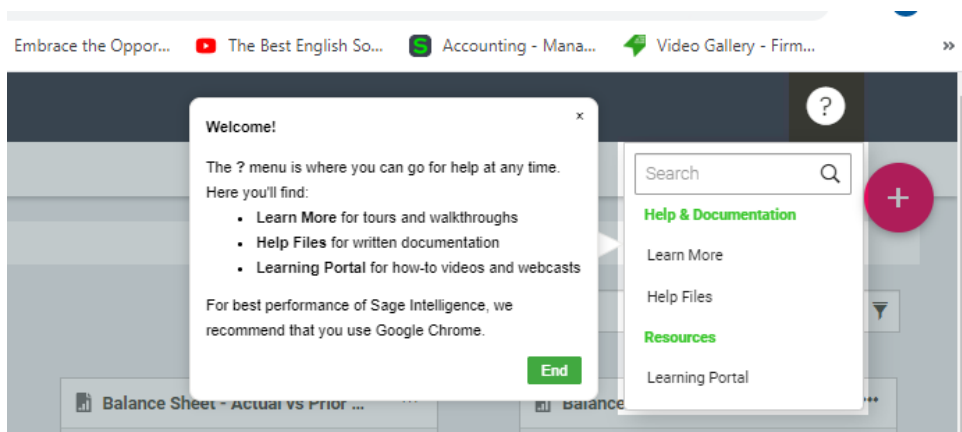
# Accounting Intelligence Reporting



## Enter Username and password Select country Malaysia



## Help ?



# Standard Reports

The screenshot displays the Sage Intelligence Reporting Cloud interface. The browser address bar shows the URL: [sageone-int.sageintelligence.com/#/StandardReports](https://sageone-int.sageintelligence.com/#/StandardReports). The page features a grid of 24 report cards, each with a title, a brief description, and a 'Run Report' button. The reports are organized as follows:

- Row 1:**
  - Balance Sheet - Actual 1to12
  - Balance Sheet - Actual 1to12 - ...
  - Balance Sheet - Actual vs Prior ...
  - Balance Sheet - CY vs PY 1to12
- Row 2:**
  - Balance Sheet - PYTD CM & YTD
  - Dashboard - Accounting
  - Dashboard - Financial
  - Dashboard Data
- Row 3:**
  - Financial Management Pack
  - Financial Management Pack - C...
  - Profit & Loss - Actual 1to12 - Ac...
  - Profit & Loss - Actual 1to12-Bud...
- Row 4:**
  - Profit & Loss - Actual 1to12-Bud...
  - Profit & Loss - Actual 1to12-Pri...
  - Profit & Loss - Actual-Budget-Pr...
  - Profit & Loss - Actual-Budget-V...
- Row 5:**
  - Profit & Loss - Actual-Prior 1to1...
  - Profit & Loss - CY Bud PY - CM ...
  - Profit & Loss - CY Bud Var 1to1...
  - Profit & Loss - CY PY 1to12 & Y...
- Row 6:**
  - Profit and Loss Current Period a...
  - Statement of Assets and Liabilit...

Each report card includes a 'Run Report' button. The interface also features 'Activate Windows' watermarks on the right side, with the text 'Go to Settings to activate Windows.' and a red '+' icon.

# Balance Sheet - Actual 1to12

	Closing Balance 01	Closing Balance 02	Closing Balance 03	Closing Balance 04	Closing Balance 05	Closing Balance 06	Closing Balance 07	Closing Balance 08	Closing Balance 09	Closing Balance 10	Closing Balance 11
<b>Assets</b>											
Non-Current Assets	102 500	102 500	102 500	102 500	102 500	102 500	102 500	102 500	102 500	102 500	102 500
Current Assets	3 567 376	3 678 376	3 691 428	3 697 900	3 731 542	3 652 918	3 745 809	3 745 809	3 745 809	3 745 809	3 745 809
<b>Total Assets</b>	<b>3 669 876</b>	<b>3 780 876</b>	<b>3 793 928</b>	<b>3 800 400</b>	<b>3 834 042</b>	<b>3 755 418</b>	<b>3 848 309</b>	<b>3 848 309</b>	<b>3 848 309</b>	<b>3 848 309</b>	<b>3 848 309</b>
<b>Owners Equity &amp; Liabilities</b>											
Owners Equity	(4 810 000)	(4 721 475)	(4 738 752)	(4 796 035)	(4 832 122)	(4 830 887)	(4 924 456)	(4 924 456)	(4 924 456)	(4 924 456)	(4 924 456)
<b>Total Owners Equity</b>	<b>(4 810 000)</b>	<b>(4 721 475)</b>	<b>(4 738 752)</b>	<b>(4 796 035)</b>	<b>(4 832 122)</b>	<b>(4 830 887)</b>	<b>(4 924 456)</b>	<b>(4 924 456)</b>	<b>(4 924 456)</b>	<b>(4 924 456)</b>	<b>(4 924 456)</b>
<b>Liabilities</b>											
<b>Non-Current Liabilities</b>											
Current Liabilities	9 889 331	9 894 229	9 903 964	9 943 439	9 992 285	10 034 806	10 314 835	10 314 835	10 314 835	10 314 835	10 314 835

# Balance Sheet - Actual 1to12

	Closing Balance 01	Closing Balance 02	Closing Balance 03	Closing Balance 04	Closing Balance 05	Closing Balance 06	Closing Balance 07	Closing Balance 08	Closing Balance 09	Closing Balance 10	Closing Balance 11
<b>Assets</b>											
Accum. Depreciation - Buildings	1 000	1 000	1 000	1 000	1 000	1 000	1 000	1 000	1 000	1 000	1 000
Accum. Depreciation - Equipments	60 000	60 000	60 000	60 000	60 000	60 000	60 000	60 000	60 000	60 000	60 000
Accum. Depreciation - Furniture											
Buildings	(1 000)	(1 000)	(1 000)	(1 000)	(1 000)	(1 000)	(1 000)	(1 000)	(1 000)	(1 000)	(1 000)
Equipments	42 500	42 500	42 500	42 500	42 500	42 500	42 500	42 500	42 500	42 500	42 500
Furniture & Fixtures											
<b>Non-Current Assets</b>	<b>102 500</b>	<b>102 500</b>	<b>102 500</b>	<b>102 500</b>	<b>102 500</b>	<b>102 500</b>	<b>102 500</b>	<b>102 500</b>	<b>102 500</b>	<b>102 500</b>	<b>102 500</b>
<b>Cash On Hand</b>											
Deposits											
Inventory	(14 960)	(14 960)	(14 960)	(14 960)	(14 960)	(14 960)	(14 960)	(14 960)	(14 960)	(14 960)	(14 960)
Prepaid Expenses											
Reimbursement											
Sundry Debtor	(13 550)	(13 550)	(13 550)	(13 550)	(13 550)	(13 550)	(13 550)	(13 550)	(13 550)	(13 550)	(13 550)
VAT Claimable											
Trade Receivables	2 740 640	2 857 539	3 157 131	3 159 412	3 192 028	3 093 572	3 269 072	3 269 072	3 269 072	3 269 072	3 269 072
Inventory Opening Balance											
1061 1401 4271	637 513	637 513	637 513	637 513	637 513	637 513	637 513	637 513	637 513	637 513	637 513
Current	2 481	2 481	2 481	2 481	2 481	(19)	(19)	(19)	(19)	(19)	(19)

## Balance Sheet - Actual vs Prior 1to12

Accounting - View Report | Accounting - Banking | Sage Intelligence Reporting Cloud

sageone-int.sageintelligence.com/#/ViewReport/b1bebbbba07c4791a7eb1df0307fd73c\_29f6e1070f4040e9bf1d4a16682349ed/0/ROOT

Apps | Mississippi State Un... | NanoBrook 90Plus... | Matrix - air fare | SciFinder - Sign In | Embrace the Oppor... | The Best English So... | Accounting - Mana... | Video Gallery - Firm...

Intelligence

Back | My Reports | Standard Reports | Excel | PDF | Log Out | Data Load

### Balance Sheet - Actual vs Prior 1to12

Company: P W Holdings .  
Year: 2021

	Closing Balance 01	Prior Closing Balance	Closing Balance 02	Prior Closing Balance	Closing Balance 03	Prior Closing Balance	Closing Balance 04	Prior Closing Balance	Closing Balance 05	Prior Closing Balance	Closing Balance 06	Prior Closing Balance
<b>Assets</b>												
Non-Current Assets	102 500		102 500		102 500		102 500		102 500		102 500	
Current Assets	3 567 376	2 263 715	3 678 376	2 272 501	3 691 428	2 464 218	3 697 900	2 588 152	3 731 542	2 510 676	3 652 918	
<b>Total Assets</b>	<b>3 669 876</b>	<b>2 263 715</b>	<b>3 780 876</b>	<b>2 272 501</b>	<b>3 793 928</b>	<b>2 464 218</b>	<b>3 800 400</b>	<b>2 588 152</b>	<b>3 834 042</b>	<b>2 510 676</b>	<b>3 755 418</b>	
<b>Owners Equity &amp; Liabilities</b>												
Owners Equity	(4 810 000)	(4 895 274)	(4 721 475)	(4 924 430)	(4 738 752)	(4 855 394)	(4 796 035)	(4 806 746)	(4 832 122)	(4 720 188)	(4 830 887)	
<b>Total Owners Equity</b>	<b>(4 810 000)</b>	<b>(4 895 274)</b>	<b>(4 721 475)</b>	<b>(4 924 430)</b>	<b>(4 738 752)</b>	<b>(4 855 394)</b>	<b>(4 796 035)</b>	<b>(4 806 746)</b>	<b>(4 832 122)</b>	<b>(4 720 188)</b>	<b>(4 830 887)</b>	
<b>Liabilities</b>												
Non-Current Liabilities												
Current Liabilities	9 889 331	8 430 322	9 894 229	8 467 258	9 903 964	8 509 962	9 943 439	8 546 473	9 992 285	8 620 542	10 034 806	

Activate Windows  
Go to Settings to activate Windows.

## Balance Sheet - Prior YTD, Current Month & YTD

Accounting - View Report | Sage Intelligence Reporting Cloud

sageone-int.sageintelligence.com/#/ViewReport/b1bebbbba07c4791a7eb1df0307fd73c\_a599b1dd92ba4507973a0be34b87223b/0/ROOT

Apps | Mississippi State Un... | NanoBrook 90Plus... | Matrix - air fare | SciFinder - Sign In | Embrace the Oppor... | The Best English So... | Accounting - Mana... | Video Gallery - Firm...

Intelligence

Back | My Reports | Standard Reports | Excel | PDF | Log Out | Data Load

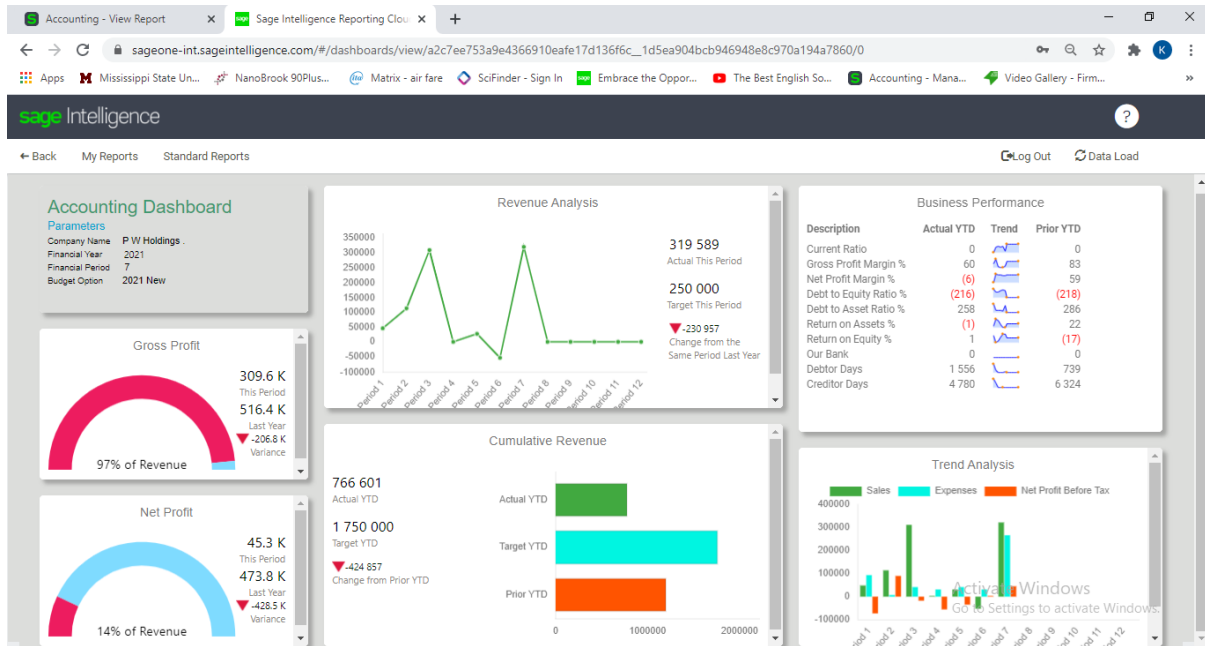
### Balance Sheet - Prior YTD, Current Month & YTD

Company: P W Holdings .  
Year: 2021  
Current Period: 7

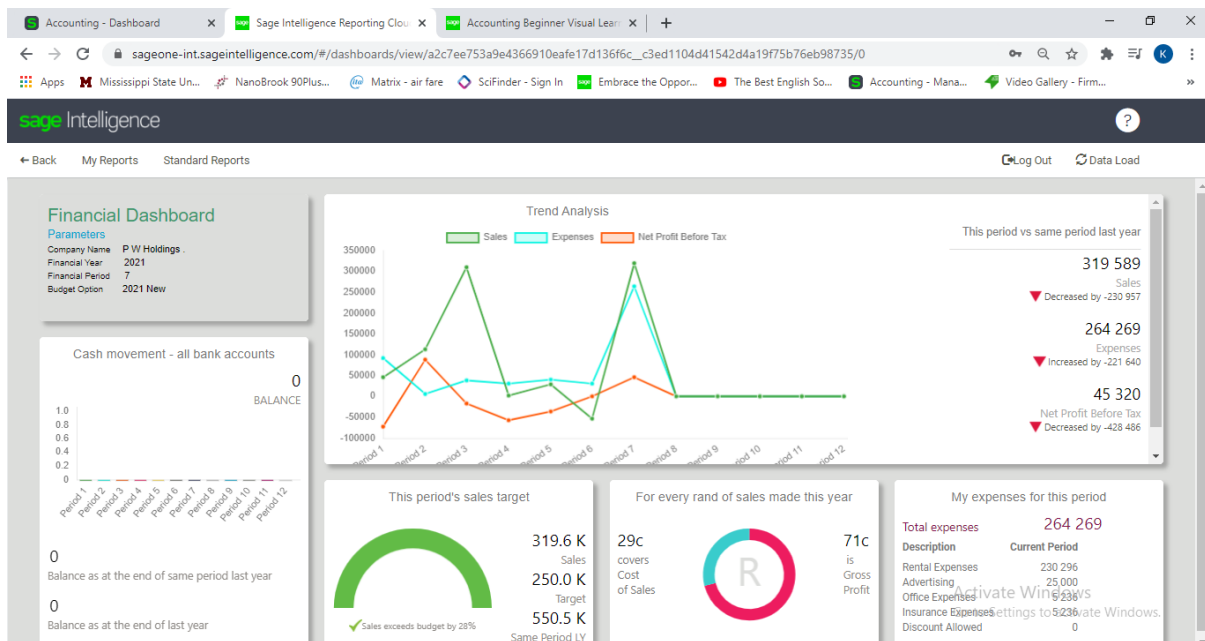
	Prior YTD	Actual Current Month	Actual YTD	Actual YTD 12
<b>Assets</b>				
Non-Current Assets	102 500		102 500	102 500
Current Assets	3 146 005	242 891	3 895 809	3 895 809
<b>Total Assets</b>	<b>3 248 505</b>	<b>242 891</b>	<b>3 998 309</b>	<b>3 998 309</b>
<b>Owners Equity &amp; Liabilities</b>				
Owners Equity	(4 271 033)	45 320	(4 785 567)	(4 785 567)
<b>Total Owners Equity</b>	<b>(4 271 033)</b>	<b>45 320</b>	<b>(4 785 567)</b>	<b>(4 785 567)</b>
<b>Liabilities</b>				

Activate Windows  
Go to Settings to activate Windows.

# Accounting Dashboard



# Financial Dashboard



# Financial Management Pack

Accounting - Dashboard | Sage Intelligence Reporting Cloud | Accounting Beginner Visual Lear...

sageone-int.sageintelligence.com/#/ViewManagementPack/f9b7ee718a9e4366910eafe17d136f6c\_7f229fb591074e498920b167ee6f29bc/0

sage Intelligence

Back My Reports Standard Reports Excel Log Out Data Load

## sage Intelligence

### Financial Management Pack

Prepared for you by Sage Intelligence

Profit & Loss - Actual, Budget, Variance 1 to 12 & YTD

Company: P W Holdings, Year: 2021, Budget Code: 842

	Actual 01	Budget 01	Variance 01	Actual 02	Budget 02	Variance 02	Actual 03	Budget 03	Variance 03	Actual 04
Sales	45 818	250 000	204 182	112 943	250 000	137 057	310 550	250 000	(60 550)	1
Cost of Sales	25 429		(25 429)	17 577		(17 577)	288 594		(288 594)	28
Gross Profit	20 389	250 000	229 611	95 367	250 000	154 633	21 956	250 000	228 044	(26)
Other Income										
Total Income	20 389	250 000	(229 611)	95 367	250 000	(154 633)	21 956	250 000	(228 044)	(26)
Expenses	92 759	40 000	(52 759)	6 842	40 000	33 158	39 234	40 000	766	31
Net Profit Before Tax	(72 370)	210 000	(282 370)	88 525	210 000	(121 475)	(17 277)	210 000	(227 277)	(57)
Income Tax										
Net Profit After Tax	(72 370)	210 000	(282 370)	88 525	210 000	(121 475)	(17 277)	210 000	(227 277)	(57)

Profit & Loss - CY Bud PY - CM & YTD

Company: P W Holdings, Year: 2021, Budget Code: 842, Current Period: 7

	Actual	Budget	Prior	Actual YTD	Budget YTD	Prior YTD	Actual YTD 12	Budget YTD 12	Prior YTD 12
Sales	319 589	250 000	550 546	766 601	1 750 000	1 191 457	766 601	3 000 000	1 547 213
Cost of Sales	10 000		34 111	309 186		206 866	309 186		804 797
Gross Profit	309 589	250 000	516 435	457 415	1 750 000	984 592	457 415	3 000 000	742 416
Other Income				6			6		2 000
Total Income	309 589	250 000	516 435	457 421	1 750 000	984 592	457 421	3 000 000	744 416
Expenses	264 269	40 000	42 629	505 358	280 000	275 739	505 358	480 000	502 160
Net Profit Before Tax	45 320	210 000	473 806	(47 937)	1 470 000	708 853	(47 937)	2 520 000	242 256
Income Tax									
Net Profit After Tax	45 320	210 000	473 806	(47 937)	1 470 000	708 853	(47 937)	2 520 000	242 256